



Your Intelligent Data Strategy for AI

Using your organization's data to
fuel transformative innovation



Contents

Introduction to intelligent data for AI	03
Overcoming common data challenges	04
Crafting a data strategy for innovation	06
Kickstart your intelligent data strategy with Azure	09

Introduction to intelligent data for AI

In times of constant change, data offers businesses clarity and guidance.

By using AI to analyze and identify patterns in historical and real-time data, decision makers have been able to spot areas for improvement, find growth opportunities, and avoid potential disruptions. Now, generative AI is expanding the potential value an organization's data can deliver.

Today's businesses want to dig deeper into their mountains of data and extract the information that will help get the best results from their generative AI apps.

Whether they're looking to enhance their predictive power or create new products and digital experiences, many organizations know that the intelligence to drive AI innovation is buried somewhere in their data—they just need the ability to find it and use it efficiently and effectively.

Essentially, your data can illuminate paths to success—and the more data you have, the brighter that light can be.

However, more data means more complexity. Organizations with a lot of data may struggle to use it effectively, slowing innovation and driving down the value of their analytics initiatives. To avoid obstacles in your path to innovation, you need a strong data strategy that addresses the most common data complexities.

Whether you're looking to use AI and analytics to drive customer insights, improve product performance, or fuel more impactful marketing campaigns, this e-book will help you identify the most common data challenges and the strategies to overcome them.



What is intelligent data?

Intelligent data involves capturing all of the intelligence inside an organization's data, which is key to driving innovation and differentiation in today's competitive landscape.

Overcoming common data challenges

Business leaders today realize that data and AI are fundamental to creating digital experiences and products and allowing them to connect with customers, employees, and partners in ways never before possible. However, IT teams using fragmented platforms and solutions commonly encounter data challenges that can drive down the potential value of their AI projects.

Given today's constant stream of data from internal operations, customer interactions, social media, and IoT devices, an intelligent data strategy for AI must start with overcoming the following challenges:

1: Low visibility

The complexity of managing data across multiple platforms can reduce data visibility, and even cause organizations to miss critical information. As organizations embrace a multitude of technologies to support various business functions, data becomes distributed across a complex ecosystem, spanning on-premises infrastructure, cloud services, third-party applications, and partner networks. Each platform operates within its silo, housing valuable datasets that remain isolated from one another. This fragmentation complicates data access and integration and hampers the organization's ability to consolidate information and derive holistic insights.



2: Lack of agility

The pace at which data becomes available is crucial for timely decision-making. As businesses accumulate vast volumes of data from diverse sources, including internal systems, external partners, and customer interactions, ingesting, processing, and delivering data in real time becomes increasingly intricate. Legacy data infrastructures aren't typically suited to handle the velocity and variety of modern data streams, and often struggle to keep pace with the demand for rapid data access and analysis. As a result, data may languish in silos, undergo lengthy processing pipelines, or remain trapped in outdated systems, delaying its availability for decision-making purposes.

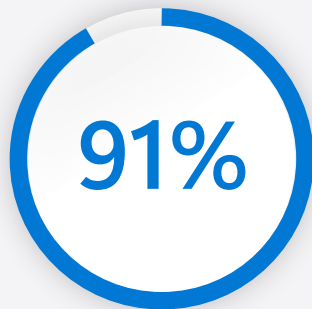
3: Data security and compliance

Managing data threats and ensuring compliance with regional and international laws is increasingly complex and time-consuming. As data traverses through various stages of collection, storage, processing, and analysis, it can become susceptible to security threats, ranging from unauthorized access and data breaches to malicious attacks and insider threats. The dynamic nature of AI and analytics workflows exacerbates these risks, as data continuously flows through complex pipelines and algorithms, increasing the attack surface and potential points of vulnerability.

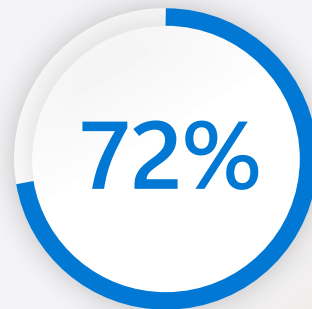
4: AI readiness

Professionals anticipate that AI will transform global business, yet data management issues pose significant barriers to using AI technologies. AI algorithms thrive on clean, accurate, and relevant data. However, data silos, inconsistencies in data formats, and data entry errors can introduce noise and bias, undermining the reliability and efficacy of AI models. Without robust data management practices in place to ensure data integrity and quality assurance, organizations risk deploying AI solutions built on shaky foundations, leading to unreliable outcomes and suboptimal decision-making.

Data is only useful if you can manage and secure it.



of business leaders say the increasing volume of data limits the success of their organizations.



say the volume and lack of trust in their data have stopped them from making decisions.¹

Crafting a data strategy for innovation

Siloed data causes a ripple effect that has the potential to impact every aspect of your organization—including your plans for innovating with AI.

By adopting a unified data strategy, you can ensure an open environment where data is accessible, secure, and ready for AI innovation.

A strong data strategy combines analytics, cloud technology, AI, security, and operational data workloads in a unified, intelligent construct—an intelligent data platform. This kind of platform supports your organization's data needs across the entire lifecycle, including collection, analysis, and visualization, while also providing a robust foundation of governance and security.

An effective data platform considers many different components, including transactional databases, real-time and historical data, unstructured data, IoT sensors, AI and machine learning, and high-performance analytical data stores. Meanwhile, an orchestration layer helps connect disparate tools and data stores, and the governance layer helps ensure consistent data management across your organization.

Four key features that make a successful data strategy

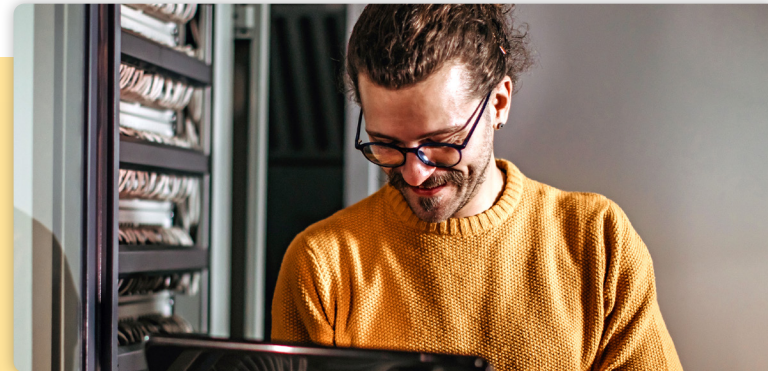
An intelligent data platform encompasses four key features:

→ Databases

Transactional databases help organizations manage and store their data for day-to-day operations. They're typically optimized for fast and efficient data retrieval and updates. With many organizations using dozens or even hundreds of databases, an intelligent data platform helps connect them so teams can easily copy data from databases to analytic data stores and keep those stores synchronized as data changes. In this way, a unified data platform helps you easily use your data for analysis and visualization while also ensuring governance and regulatory compliance.

→ Analytics

The three primary areas of analytics within an intelligent data platform include data ingestion, analytical data storage, and data visualization. With these three components working together seamlessly on a unified platform, you can more easily turn raw data into insights and uncover trends that point to opportunities for growth.



→ **AI and machine learning**

Innovating with AI requires operational databases, analytics, and governance solutions designed to work together so you can spend less time on data integration and more time on value creation. An intelligent data platform helps minimize integration bottlenecks and administrative overheads so that IT teams are free to focus on developing AI-driven products and services.

→ **Data security**

Building a successful data strategy requires data that can be trusted. An intelligent data platform allows organizations to identify new threats and respond quickly by enabling a layered defense-in-depth security approach. This layered approach involves cloud security, access management, threat protection, and encryption for data in transit and at rest.

Benefits of using an intelligent data platform

Bring order to complex data estates

Many organizations have difficulty organizing their data and using it effectively, resulting in wasted resources while delivering poorer results. Adopting an intelligent data platform provides an organized construct that brings solutions together from across their data estate, breaking down siloes so teams can feel empowered by their data—instead of hindered by it.

Empower leadership to make informed, real-time decisions

The longer data remains hidden or inaccessible, the less value it holds for making intelligent business decisions. If the data at hand can't accurately reveal the current reality of operations, markets, and the ever-changing business terrain, leadership can only rely on hindsight to make decisions for the future. An intelligent data platform helps deliver data where it needs to be for leaders to have a complete picture of the business at any given time, allowing them to pivot faster and make informed decisions for the best possible impact.

Unify your data with integrated database and analytics solutions

Microsoft solutions



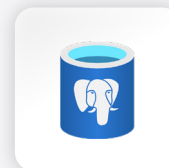
Azure
Cosmos DB >



Microsoft
Fabric >



Azure SQL >



Azure
Database for
PostgreSQL >



Azure
Database for
MySQL >

Minimize security concerns and governance complexities

Data can create liabilities if businesses don't have reliable security because it can expose them to different risks, including breaches, cyberattacks, and non-compliance penalties. The complexity of managing data makes it difficult to identify and classify sensitive information, implement adequate encryption and masking techniques, and effectively monitor data access and usage. Unifying your data, AI, and analytics solutions on a single platform helps IT teams navigate today's threat landscape by providing more visibility in potential threats, helping them detect and respond to threats quickly while also adhering to privacy and compliance standards.



Security solutions for hybrid, multcloud, edge, and IoT protection:



Microsoft Defender XDR >



Microsoft Defender for Cloud >



Microsoft Sentinel >



Microsoft Purview >



Microsoft Priva >



Microsoft Entra >



Microsoft Intune >

Lay a solid foundation for innovating with AI

Adopting a data strategy that prioritizes breaking down silos and integrating solutions is essential for high-quality, scalable, and durable AI innovation. By taking an integrated approach to data management, organizations can streamline data workflows, eliminate redundancy, and create a cohesive data ecosystem that facilitates seamless data access, analysis, and use for AI-driven insights generation.

This fosters an environment where ingenuity thrives, as businesses can quickly develop and deploy intelligent solutions that respond to market demands, enhance customer engagement, and streamline operations.

Kickstart your intelligent data strategy with Azure

The ability to mine your data for intelligence is the key to powering successful AI initiatives. Microsoft Azure empowers organizations to remove common barriers to using their intelligent data so they can effectively innovate experiences that were previously unimaginable.

Offering a full tech stack across four cloud workloads—AI, analytics, databases, and security—Azure helps organizations apply cutting-edge AI technologies and differentiate their offerings in a crowded market. Using the Microsoft Intelligent Data Platform, Microsoft Fabric, Azure Databricks, the Azure SQL family, and other solutions, your teams can dig deeper into their data and use it to drive impactful change across your organization.

Fuel your intelligent data strategy with trusted cloud technology

- ✓ **Database and analytics:** Gain fuller visibility into your data and enable faster decision-making.
- ✓ **Security:** Help ensure compliance and safeguard data with built-in, multilayered security.
- ✓ **Innovation and AI:** Create products, services, and digital experiences that differentiate your offerings, improve customer experiences, and help employees achieve more.



Get started

Explore these whitepapers and executive-level learning resources to learn more about how to use intelligent data for AI innovation.

Dive deeper into the importance of data for AI innovation.

[Explore Azure innovation insights >](#)

Discover how the Microsoft Intelligent Data Platform helps organizations use data to accelerate AI innovation.

[Learn more >](#)

Learn more about unifying your data for AI.

[Watch the webinar >](#)